

# Our Journey Through Autumn Term Looks Very Exciting in Reception!

## Literacy

Our focus this half term is 'Marvellous Me!'. 



We will be learning about each other, our families and our local community by exploring the text 'Super Duper You'. We will have plenty of opportunities to build on communication and language, sharing our thoughts and experiences.

Through our text 'The colour monster' and 'Ravi's roar' we will begin to understand the feelings we may experience everyday and identify how it changes our behaviour.

We will also use this time to sing lots of familiar nursery rhymes, share stories daily and use our recently introduced vocabulary in conversations with adults and peers.

## Expressive Art and Design.

This term as part of our transition we will be completing self portraits using paint. We will begin to mix colours to find tones that represent the individual. We will also begin to name colours and have opportunities to use a variety of resources to create artwork that reflects feelings and emotions.



## Numeracy

This term our focus is on numbers to 10. We will be focusing on quickly identifying numbers to 5 visually and mentally. Through play and practical resources, we will be linking number symbols to their values by counting and making amounts. We will explore making amounts in a variety of ways such as dots, tallies, Numicon and cubes. Towards the end of the term, we will begin to name and describe simple 2D shapes.



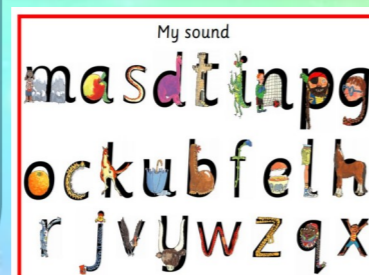
## Autumn 2024

## PE, Dance and Music

As part of our Transition, Reception will explore sounds and sing familiar rhymes and songs. Later in the term, we will recognise musical patterns and sing songs. Within PE and Dance, pupils will begin to move their bodies in different ways according to music. They will work

## Phonics

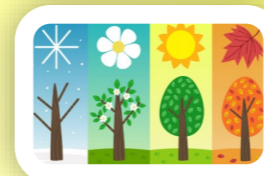
We will begin your child's introduction to early reading by teaching them letter sounds daily. They will begin to sound out simple words and read using their knowledge of sounds towards the end of the term. Your child will come home daily with a phonics homework book, where they will recall a sound, identify the sound using pictures and begin to write it.



## Understanding the World

As part of our focus 'Marvellous Me' we will begin to name and describe people who are familiar to us. Talk about members of our immediate family and community. We will begin to understand that some places are special to members of our community and recognise that some people have different beliefs and celebrate special times in different ways.

When exploring the natural world, we will recognise some similarities and differences between life in this country and life in other countries as well as seasonal changes during our Forest School sessions.



## RE/ Worship



This term we will be exploring two big questions :

*Which symbols are important to Christians?*

*Why do Christians perform nativity plays at Christmas?*

We will also take part in Diwali and Remembrance day themed activities to develop our understanding of our wider world and our local communities.

## Key Dates

Autumn term 1: 02/09/2024 - 25/10/2024

Half Term : 28/10/24 - 03/11/2024

Autumn Term 2: 04/11/2024 - 19/12/2024

Inset day - 20/12/2024

## Events

Trinity community breakfast is on 11/10/2024 at 7:30am until 9:00 am.

Reception nativity performances : 04/12/2024 at 2:00pm.

05/12/2024 at 9:30 am.



### Reminders/ Notices

- **Reading Diary** – Please try to read with your child on a daily basis as this will support the consolidation of in school learning. We will change books once a week when we read with your child. After reading with your child, please write or tick in their reading diary.
- **PE** – Every **WEDNESDAY** your child will need to attend school in their PE Kit.  
No jewellery or earrings on this day.
- **School Uniform** – Please ensure your child is in the appropriate full school uniform which is clearly labelled with their name.

**Marvellous Me** – Messages and notices from Reception staff are sent through Marvellous Me. This will be set up within the first half term for you and letters will be sent home.



### Useful Websites

These websites are pupil friendly, containing fun, interactive games to develop Maths and Literacy skills.

<https://www.phonicsplay.co.uk/>

<https://www.topmarks.co.uk>

<http://www.bbc.co.uk/schools>

**REMEMBER** To regularly check what your child is accessing online. For support with how to enable parental locks and settings.

See the website below:

<https://www.internetmatters.org/parental-controls/>



We will continue to celebrate children's achievements at home as well as school. We look forward to hearing more about what makes you proud of your child

Please continue to support your child with learning the Reception Common Exception Words

1	2	3	4	5
I	is	of	to	was
a	up	you	all	are
am	mum	my	go	come
at	dad	no	going	they
it	cat	yes	this	said
in	dog	me	went	see
on	big	he	day	look
and	get	she	away	for
the	can	we	play	like

### Staffing In Reception

Red Class : Teacher : Miss Morrell TA: Miss Freeman

Crimson Class : Teacher : Mrs Cooper TA: Miss Lane

Ruby Class : Teacher Mrs Watts TA: Miss Webster

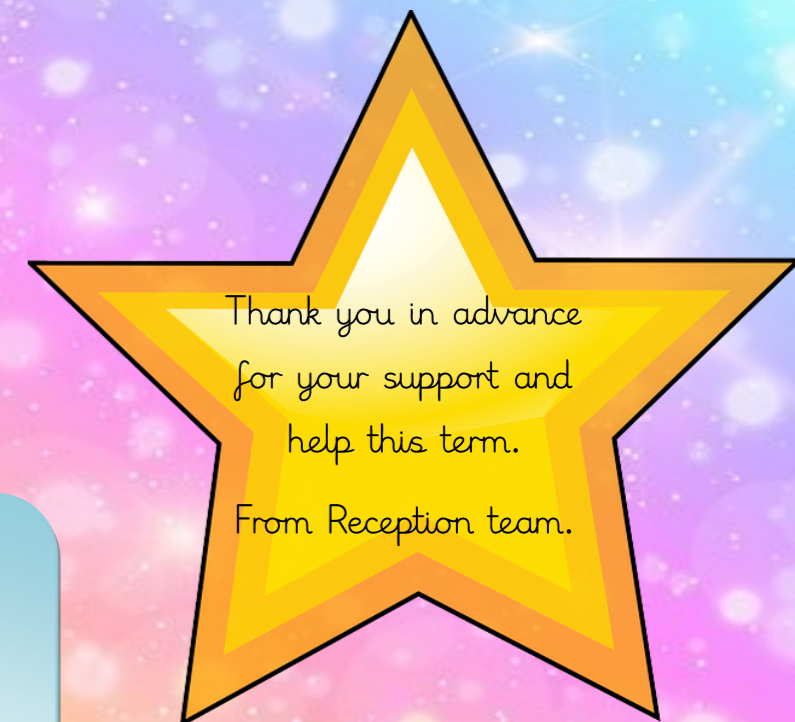
Early Years Leader : Mrs Voice

### Other information

- During your child's first half term, Reception staff will complete a baseline assessment of their key skills and this information will be shared by you later in the term.
- Continue to support your child with cutting skills and writing their name.
- Ensure your child has a waterproof coat in school as we are taking our learning outdoors whenever possible.
- Ensure that your child brings a water bottle daily.

### As the weather is getting colder

- Send your child with labelled hat and gloves on appropriate days



Thank you in advance for your support and help this term.

From Reception team.