

Diving into the deep end

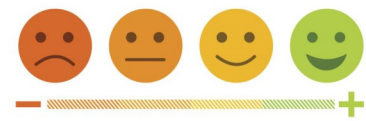
Physical Development

As our bodies grow, our movements become larger and larger and now it's time to put it to the test. We will be exploring different obstacles courses to continue our development of balance and coordination. We will also be embracing the 'Under the Sea' lifestyle by moving to music related to the Ocean through the art of Yoga. We will play with materials to create waves and patterns with our bodies.



Personal, Social and Emotional

This term we will be focusing on handling and exploring emotions, talking about our feelings as well as the feelings of others. We will hopefully all be working towards being independent



within our play and supporting each other through team building activities.

Phonics and Transition skills

It's that disheartening time of the year where we prepare to say goodbye to some of our Explorers. As they venture off into their new setting, we will be supporting their readiness to learn new skills, such as more advanced phonics. We will be focusing on pronunciation and developing children's listening skills through rhyming.

It's time for the final lap around the Early Explorers sea and this time we are paddling our feet ready to transition into Nursery. It's a big term for most of our Explorers as they will be moving on, so it's time to dive into the deep end one last time!

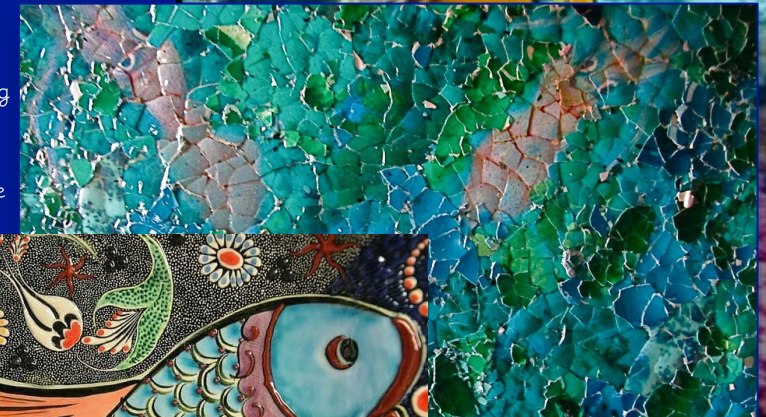
Literacy

Although we will be splashing about in under the sea, we will be beginning the final term exploring traditional tales, such as Three Little Pigs, The Gingerbread Man and The Ugly Duckling. We will continue with our trips to the school library to enhance our listening skills and involvement in the importance of story telling and imagination. As always we will be exploring different techniques for mark making and begin to develop letter formation and recognition.

Let's get CRAFTY!

As always, children will have the opportunity to create masterpieces relating to our themes of the week. Children will use different techniques, such as mark making, painting of different scales, collaging and more!

For the focus of our artwork for the final part of term, we will be looking at the work of Paul Winhun, who is most known for his use of mosaic work. We will be learning about loose parts and how we can create art through buttons and string.



Dates for your Diary

2nd May-Bank Holiday

30th May until 6th June - Half Term

22nd June - Last day of Early Explorers

Things to take note of...

Reminders

- If your child is toilet training, please inform staff on the door, so we can begin the process here and mirror your actions at home.
- We will need a couple of changes of clothes just in case!
- We will be continuing to send updates on Marvellous Me and Seesaw as best we can. If you do not have a log-in, please let Miss Sloan know and she can reprint your log-in information.
- Toys from home are being asked to stay at home – we want to ensure that all cars, animals and other toys remain safe at home and not in the hands of other children and become lost!

Time to move on...

The end of the year is slowly but surely upon us, which means saying goodbye to our Early Explorers for the 2021/22 Cohort. It has certainly been a memorable year and we will greatly miss the children. You will receive confirmation of your child's position in Nursery as of September, and for those who do not receive confirmation for September, your child will be moving up in January 2023. I think I speak on behalf of all of the team in Early Explorers to say that this year is most certainly coming to a bittersweet end as children have made their lasting impression with their smiles, talkative side and their imagination. Most definitely a year for us all to remember.

Your Early Explorers Team
Miss Sloan, Miss Freeman and Miss Ruby

Morning Session

Day	Registration 8.30 – 9.10	Child Initiated Play 8.30 – 9.30	Lesson 1 9.30 – 9.45	10.00 – 10.15 Snack Time	Child Initiated Time 10.15 – 10.50	Designated Key Workers Nappy Routine 10.15 – 10.40	Lesson 2 10.50 – 11.20	End of Day Dismissal 11.30
Monday			PHYSICAL DEVELOPMENT Music and Movement Session		Inside/Outside Focused Observations		LITERACY Library Visit	
Tuesday			PSED Family group		Inside/Outside Focused Observations		MATHEMATICS (SSM)	
Wednesday			COMMUNICATON & LANGUAGE Family group		Inside/Outside Focused Observations		PHONICS	
Thursday			EXPRESSIVE ARTS & DESIGN Family group		Inside/Outside Focused Observations		MATHEMATICS (N)	
Friday			UNDERSTANDING THE WORLD Forest School		UNDERSTANDING THE WORLD Forest School		Free Flow Play/Nappy Changes	

Afternoon Session

Day	Registration 12.30 – 12.50	Child Initiated Play 12.30 – 1.20	Lesson 1 1.20 – 1.45	1.45 – 2.00 Snack Time	Child Initiated Time 2.00 – 2.25	Designated Key Workers Nappy Routine 2.00 – 2.25	Lesson 2 2.30 – 3.00	End of Day Dismissal 3.30
Monday			PHYSICAL DEVELOPMENT Music and Movement Session		Inside/Outside Focused Observations		LITERACY Library Visit	
Tuesday			PSED Family group		Inside/Outside Focused Observations		MATHEMATICS (SSM)	
Wednesday			COMMUNICATON & LANGUAGE Family group		Inside/Outside Focused Observations		PHONICS	
Thursday			EXPRESSIVE ARTS & DESIGN Family group		Inside/Outside Focused Observations		MATHEMATICS (N)	
Friday			UNDERSTANDING THE WORLD Forest School		Forest School		Free Flow Play/Nappy Changes	